

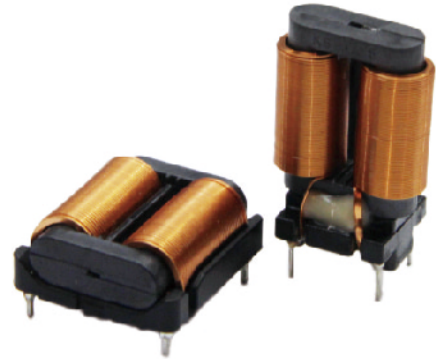
# FRAME CORE CHOKES

## FEATURES

- Small size, low leakage flux due to OSQ core
- Low stray capacitance, High attenuation of a wide frequency band
- There is no danger of the layer short for the single-layer rolling
- High attenuation to the normal mode noise
- Winding time 90% down
- High inductance was achieved by the ferrite mixing and the baking technology that developed originally.
- Weight: approximately 30g

## SPECIFICATION

- Rated Voltage: AC/DC 250V
- Operating Temperature Range: -40~120°C
- Withstanding Voltage: AC2000V 60sec. or AC2400V 1~2sec.(LINE to LINE)
- Insulation Resistance: DC500V, 100MΩmin.(LINE to LINE)

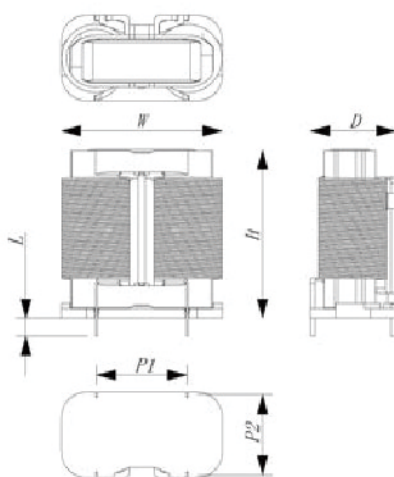


## FACCF31 Series

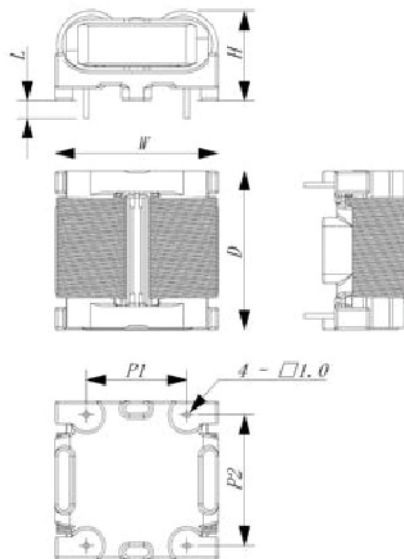
$L_R$ +30/-50%	mH	5	6	8	10	15	20
$L_{R\text{ typ}}$	A	6	5	4	3.5	3	2.5
$R_{\text{typ}}$	mΩ	68	95	130	150	200	280
Ordering code		FACCF31H/V -06050	FACCF31H/V -05060	FACCF31H/V -04080	FACCF31H/V -3R5100	FACCF31H/V -03150	FACCF31H/V -2R5200

Rated inductance  $L_R$  : measured at 10kHz, 0.1 mA, 20°C

### V-type



### H-type



### V-type

W = 35 max.  
D = 19 max.  
H = 35 max.  
L = (3.5)  
P1 = (18)  
P2 = (16)

### H-type

W = 35 max.  
D = 33 max.  
H = 20.5 max.  
L = (3.5)  
P1 = (20)  
P2 = (26)



**FUAN ELECTRONIC**

EML: pairui007@fuantronics.com | TEL: +86 (514) 8769-3589 | WEB: www.fuantronics.net

